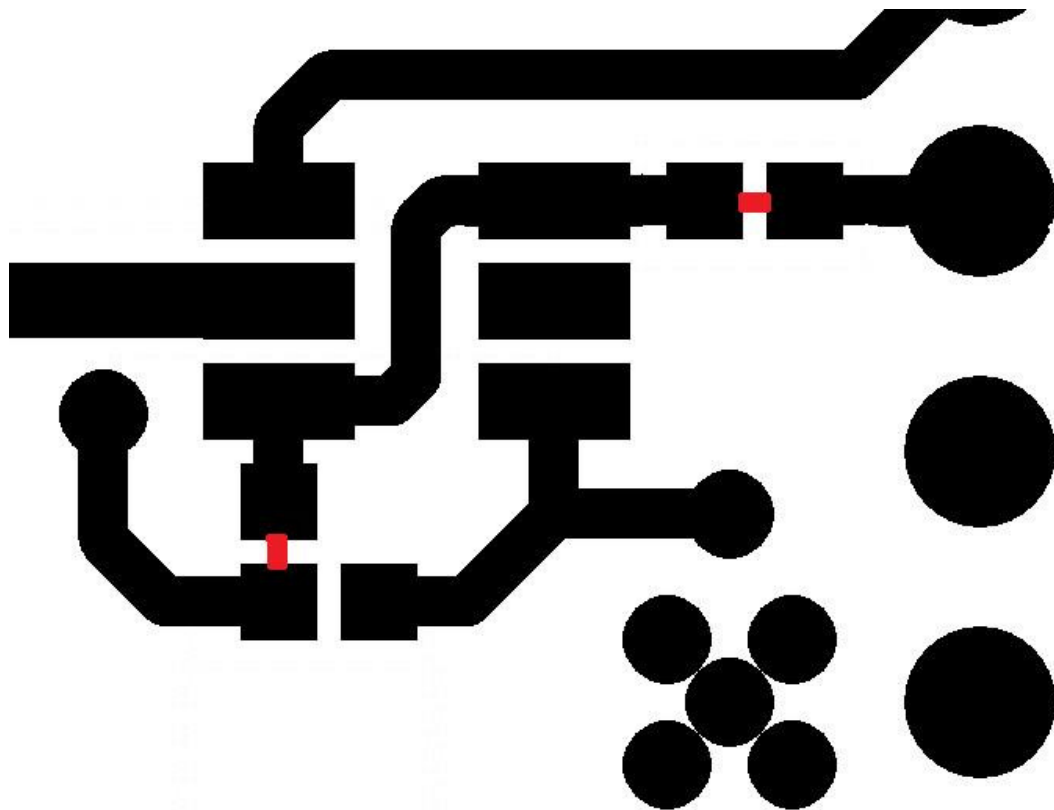


NOS ReClocker Board Jumper Settings

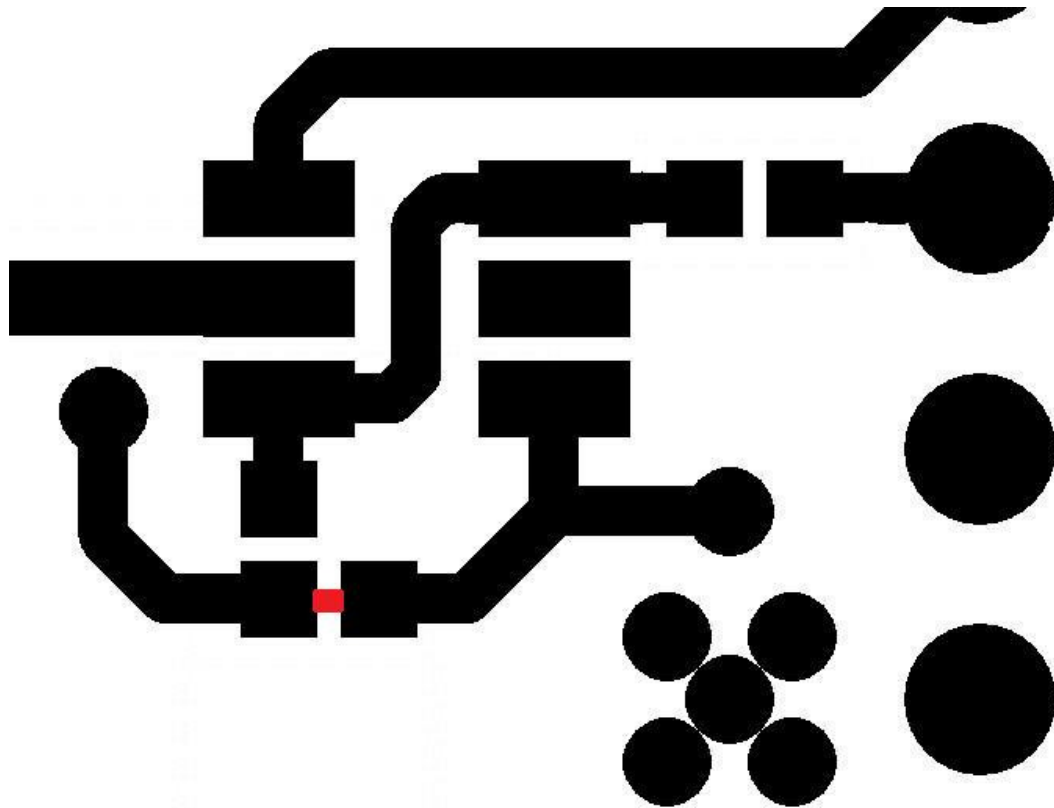
Under the NET Audio NOS ReClocker Board there are a few small pads as shown in the pictures below. These pads when joined configure the NOS ReClocker boards function.

If the NOS ReClocker board is being used with the CD Players on board crystal i.e. no external clock is present, then the jumpers should be soldered across as shown with the red lines. Be careful not to join any other jumpers or damage may occur to the board and it will not function correctly.



Jumper Bridging for on board crystal.

If you are using an external clock then only one jumper need bridging as shown below.



Jumper Bridging for External Clock